



SHAW DOG PARK  
MEET. SNIFF. RUN. PLAY.

# COMMUNITY MEETING

September 30, 2020

# AGENDA

---

- Welcome / Rules of the Road
- Introductions
- Project Overview
- Discussion – Q&A
- Milestone Schedule
- Next Steps
- Closing / Contact Information



# READY2PLAY DC



HELP PLAN THE FUTURE OF PARKS AND  
RECREATION IN DC . SHARE YOUR  
IDEAS AND ENGAGE THROUGH OUR  
INTERACTIVE WEBSITE

**READY2PLAYDC.COM**



# OUR VIRTUAL MEETING NORMS

---



Please keep your microphone on mute during the presentation.



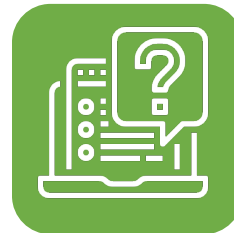
Please use the chat feature to ask questions or provide comments



Please be sure to submit your question / comment to “*Everyone*” so the design team can see them and for documentation purposes.



General questions will be answered at the end of the meeting.



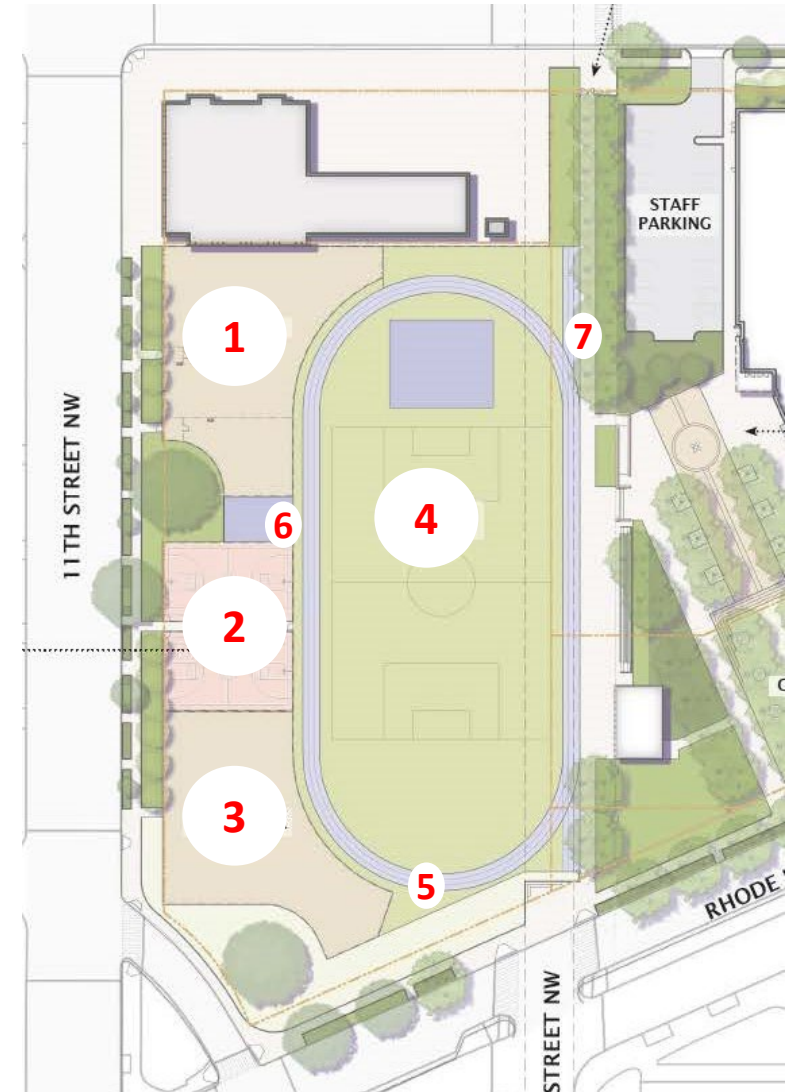
If your question is not answered, DPR is tracking all questions and will create a Q/A document to share after the meeting.



Please email any additional comments or questions to **Tommie Jones** at [tommie.jones@dc.gov](mailto:tommie.jones@dc.gov)

## RECREATION IMPROVEMENTS BROUGHT TO SHAW BY THE BANNEKER HS PROJECT

01. Dog Park
02. BB Courts (2)
03. Skate Park
04. Athletic Field
05. Track
06. Outdoor Exercising Area
07. 10<sup>th</sup> Street Pedestrian Corridor

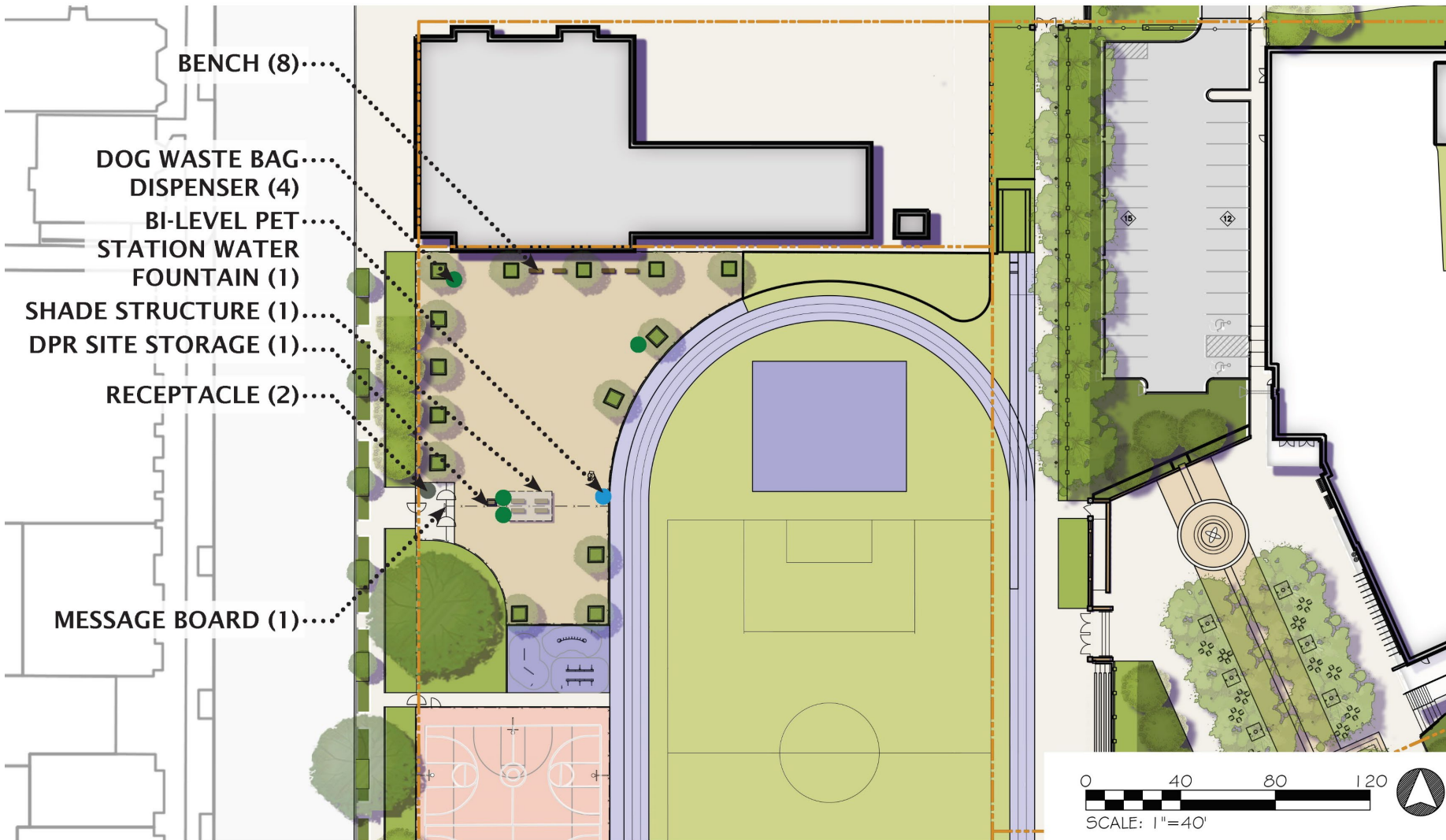


# DESIGN / BUILD TEAMS (Introductions)

---



# DOG PARK DESIGN



Current Dog Park Footprint  
**14,261 SF**  
(Entry Vestibules (2): 178 SF,  
Small Dogs: 1,843 SF, Large  
Dogs: 12,240 SF).

**New Dog Park footprint**  
**14,276 SF**

Vestibule (1)  
**321 SF**  
Small Dogs area  
**2,779 SF**  
Large Dogs area  
**11,176 SF**



# IMPROVEMENTS WITH DOG PARK RENOVATION PROJECT

---

1. New surfacing and grading
2. New trees and exterior landscaped area
3. Improved lighting and consistent service schedule through the year
4. New fencing, water fountain with hose connection, trash/recycling receptacles, bag dispensers, board, storage, shade structure
5. Buffer area between BB courts / skatepark and dog park
6. A vinyl screen between the Track / Field will provide the Dog Park with more privacy



# DPR STANDARD DOG PARK MATERIALS



Surfacing



Fencing



Lighting (Musco System)



Water fountain



Bag dispensers



Storage



DPR Recycling / Trash



Standard DPR signs



Standard DPR board

# FRIENDS OF SHAW DOG PARK NEW PARTNERSHIP

---

1. Opening/closure dog park and operational times
2. Bag replacements / storage
3. Maintenance

# DISCUSSION / QUESTIONS

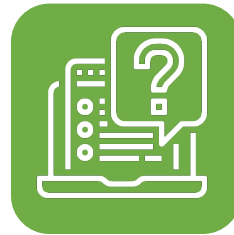
---



Please use the chat feature to ask questions or provide comments



Please be sure to submit your question / comment to *“Everyone”*



If your question is not answered, DPR is tracking all questions and will create a Q/A document to share after the meeting.

# CURRENT STATUS / SEQUENCING DIAGRAM

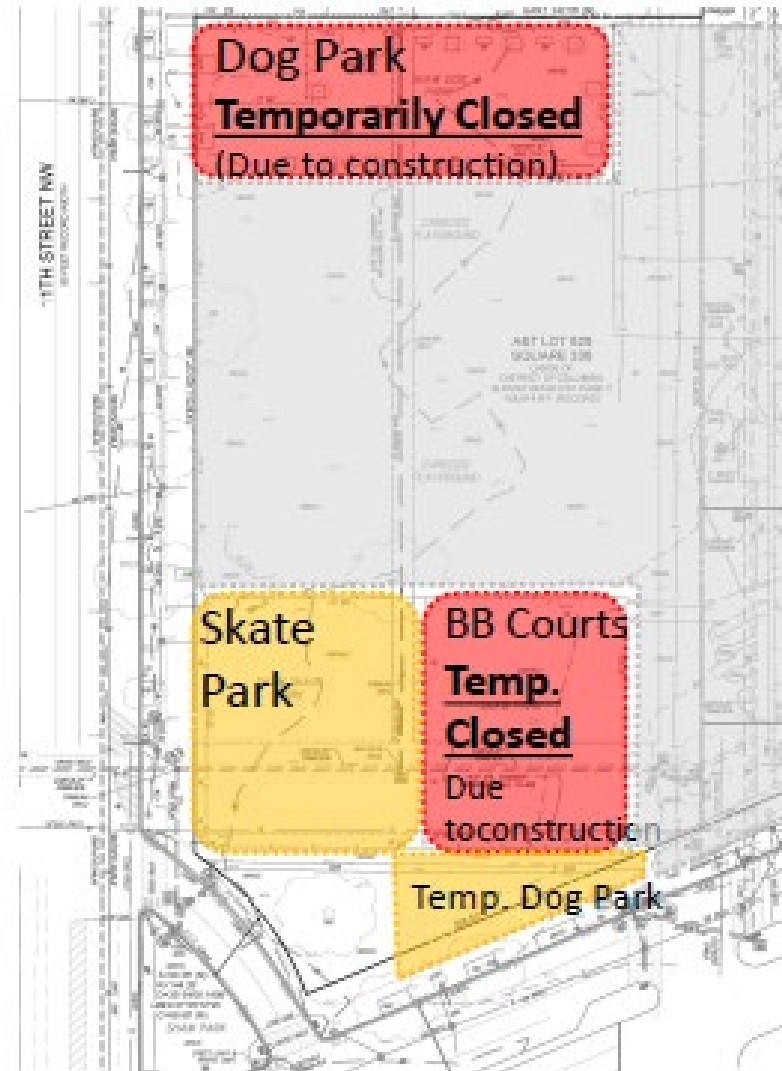
## Dog Park / BB Courts

**Closed.** Will reopen in August 2021

## Skate Park & Temporary Dog Park

**Open.** Will close in late 2020

All amenities will reopen in August 2021, aligned with the reopening of Banneker HS.



- **Temporary closed** for construction
- **Open until late 2020,** when they will close temporarily for construction

# MILESTONE / SCHEDULE

---

- |  |                       |
|--|-----------------------|
| • 1 <sup>st</sup> Community Meeting to Review Design | <b>September 2020</b> |
| • 2 <sup>nd</sup> Community Meeting to Review Design | <b>Winter, 2020</b>   |
| • Construction Kickoff / Final Comm. Meeting         | <b>Spring 2021</b>    |
| • Construction Completion                            | <b>August 2021</b>    |

# NEXT STEPS

---

- Please email all comments to **Tommie Jones** (DPR) at [tommie.jones@dc.gov](mailto:tommie.jones@dc.gov).
- DPR will collect all comments from this meeting and work with the design/build teams to make adjustments to the project before the construction.
- DPR will present the final project at the next community meeting (Winter 2020).

# POINTS OF CONTACT

---

## DC DEPARTMENT OF PARKS AND RECREATION

### **Tommie Jones**

Chief of Internal Affairs

[tommie.jones@dc.gov](mailto:tommie.jones@dc.gov)

202.431.8676

### **Brent Sisco**

Capital Projects Officer

[brent.sisco@dc.gov](mailto:brent.sisco@dc.gov)

202.615.9824

### **Dulce Naime**

Community Planner

[dulce.naime@dc.gov](mailto:dulce.naime@dc.gov)

202.213.6547

## **WEBSITE**

<https://shawdogpark.splashthat.com/>